

EU Structural Policy 2020+

Challenges when Targeting Functional Areas



1. Target Conflicts
2. Baden-Württemberg and the Rationale behind RegioWIN
3. The RegioWIN Instrument – transferring Smart Specialisation to sub-regional level
4. Outcome of the Competition - a Success
5. Empowering Principles of Regulation for 2020+

presented by
Magdalene Häberle
Head of Division ERDF Governance



Baden-Württemberg

MINISTERIUM FÜR WIRTSCHAFT, ARBEIT UND WOHNUNGSBAU

Functional Areas

- many possibilities to define a functional area
- various types and levels of administrative authorities
- need for integrated concepts
- honor the principle of subsidiarity to tap into local knowledge
- multitude of stakeholders with a variety of legitimations and conflicting interests
- types of projects and beneficiaris difficult to predict

ESIF regulation / managing bodies

- OP defines, what is possible
- precisely predefined framework conditions for instruments like ITI etc.
- many strict formal requirements, formalised procedures
- OP must be predictable
- compatibility with state aid rules
- sound financial management
- experiments are not rewarded



Baden-Württemberg - Facts and Figures



- One of 16 States of the Federal Republic of Germany
- 10,8 Mio Inhabitants
- 35 km²
- Annual State Budget 44 bn Euro
- GDP 446 bn Euro
- R&D Investment 4,8 % of GDP, thereof 80 % private investment
- ERDF 2014-2020 budget: 246 Mio Euro

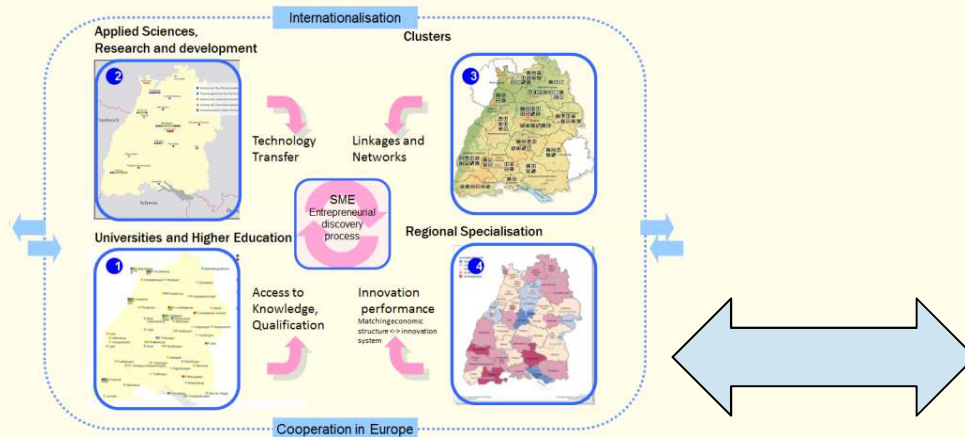


Baden-Württemberg

MINISTERIUM FÜR WIRTSCHAFT, ARBEIT UND WOHNUNGSBAU

Innovation serving Sustainable Growth and Competitiveness

Mayor Focus Areas

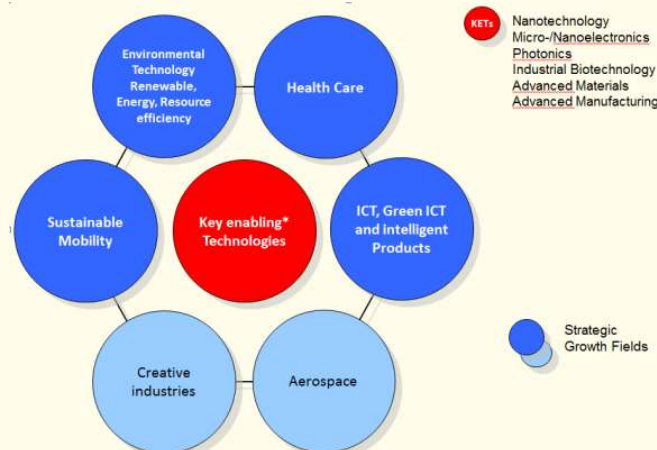


Global Challenges and Opportunities

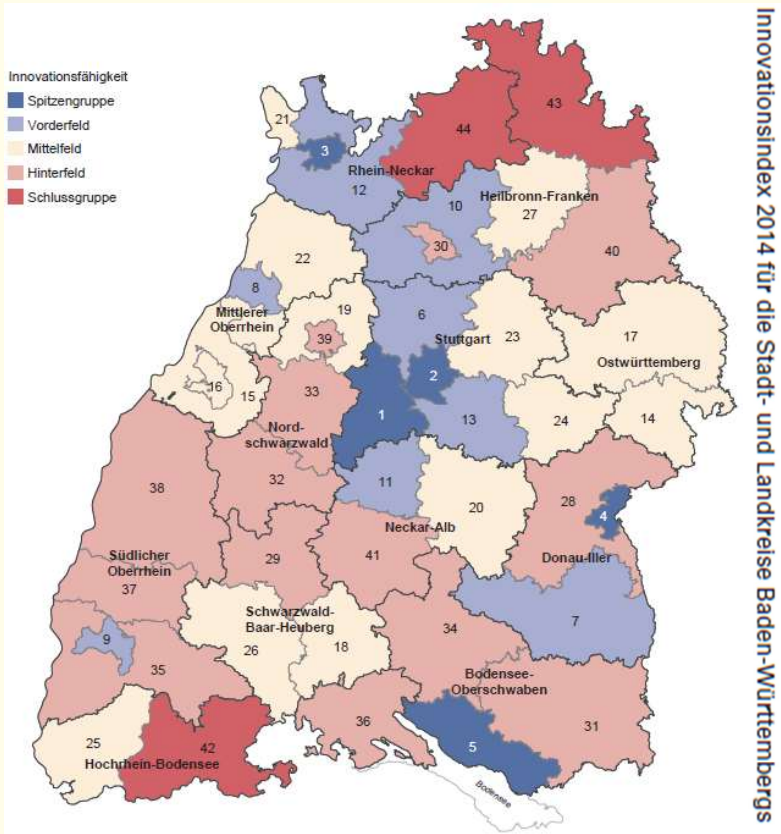
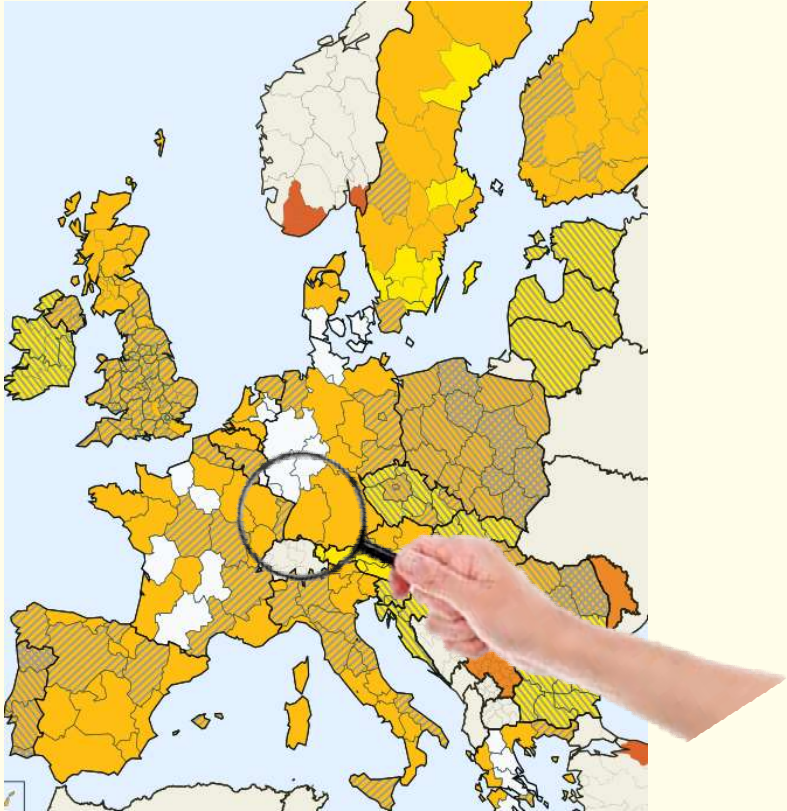
- **Global competition for innovation** – increasing technological competence of global competitors (e.g. China)
- **Climate change** – energy transition – smart grids
- **Aging societies** – lack of qualified workforce
- **Digital revolution** - web based economy – 4th industrial revolution: „Industry 4.0“ – „smart production“ intelligent production systems and processes – „smart factories“
- **Europe:** Industrial renewal? Economic convergence?



Strategic Growth Fields



Innovation related Challenges at sub-regional level



Baden-Württemberg

MINISTERIUM FÜR WIRTSCHAFT, ARBEIT UND WOHNUNGSBAU



Bringing Smart Specialisation to sub-regional level in BW

Involving stakeholders at sub-regional level



Not a funding programme, but an **interregional competition**

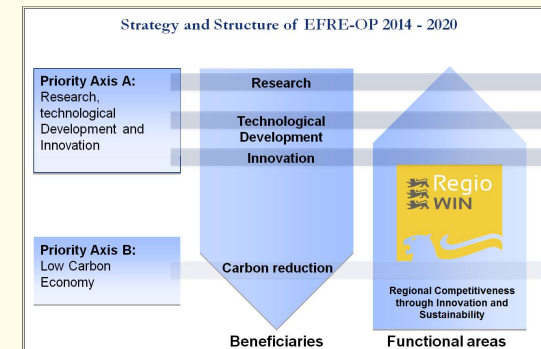
- based on smart specialisation
- addressing the five central challenges
- create best ideas in terms of regional development

Goal

- Support cities and regions aka functional areas to enhance their competitiveness
- Involve stakeholders in strategy development as base for future regional development
- Regional ownership of strategy and project implementation
- Regional development activities should encompass much more than the ERDF programme scope

Input

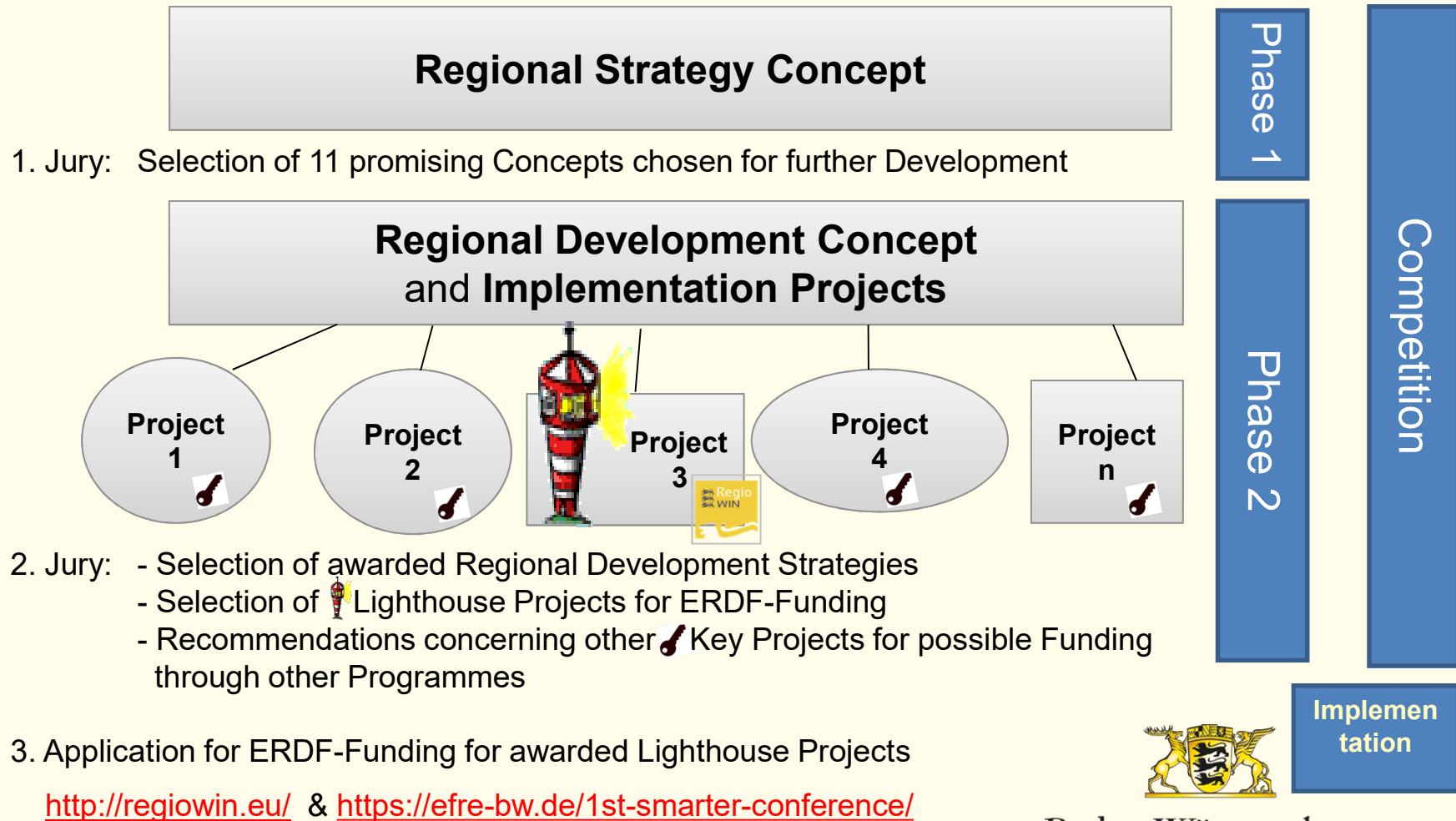
- Joint effort of three BW ministries
- Full coverage of ERDF programme range
- Long range preparation



Baden-Württemberg

MINISTERIUM FÜR WIRTSCHAFT, ARBEIT UND WOHNUNGSBAU

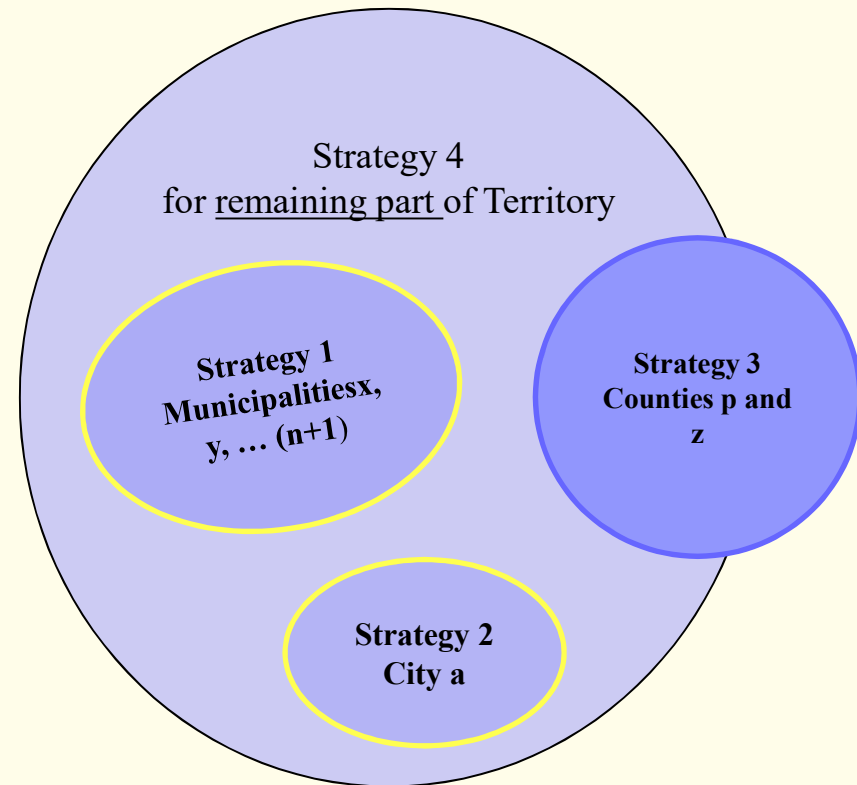
Competitiveness - Innovation - Sustainability



The Single-Spatial-Strategy Principle



OR



Baden-Württemberg

MINISTERIUM FÜR WIRTSCHAFT, ARBEIT UND WOHNUNGSBAU



Outcome of the competition – a success



Thematic Focus of Regional Development Strategies

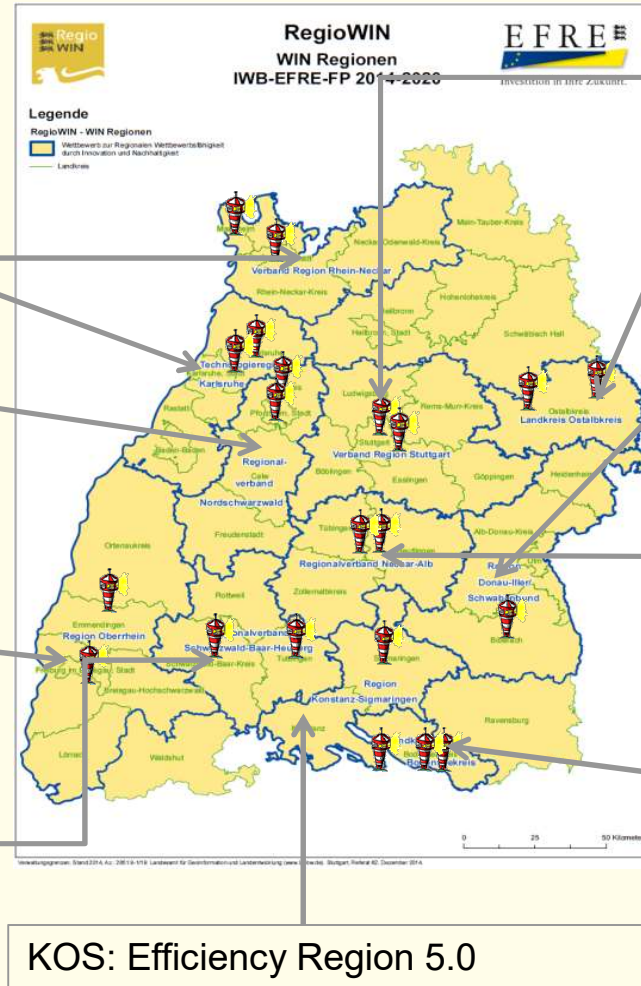
MRN: Smart Innovation, Distribution and Energy

TRK: Smart Movement - Mobility & Energy

NSW: Precision technology and sustainable materials

SUO: Sustainable Energy Valley

SBH: Knowhow intensive Industries in micro- and medical technology



Baden-Württemberg


MINISTERIUM FÜR WIRTSCHAFT, ARBEIT UND WOHNUNGSBAU



Wien, 28th September 2017, Slide 10

Outcome of the competition – a success

Large Variety of Projects

- 21  - Lighthouse projects covering full range of BW ERDF-OP translate into
- 34 ERDF funded (sub-)projects using seven different measure types
- Increase of regional influence on location decisions



wirtschaftsnahe Forschungsinfrastruktur



Regionales Innovationszentrum



Innovationsinfrastruktur



Clustermanagements (incl. Holz)



Technologietransfer



Verbundforschung



KmS Bewusstseinsbildung



Baden-Württemberg

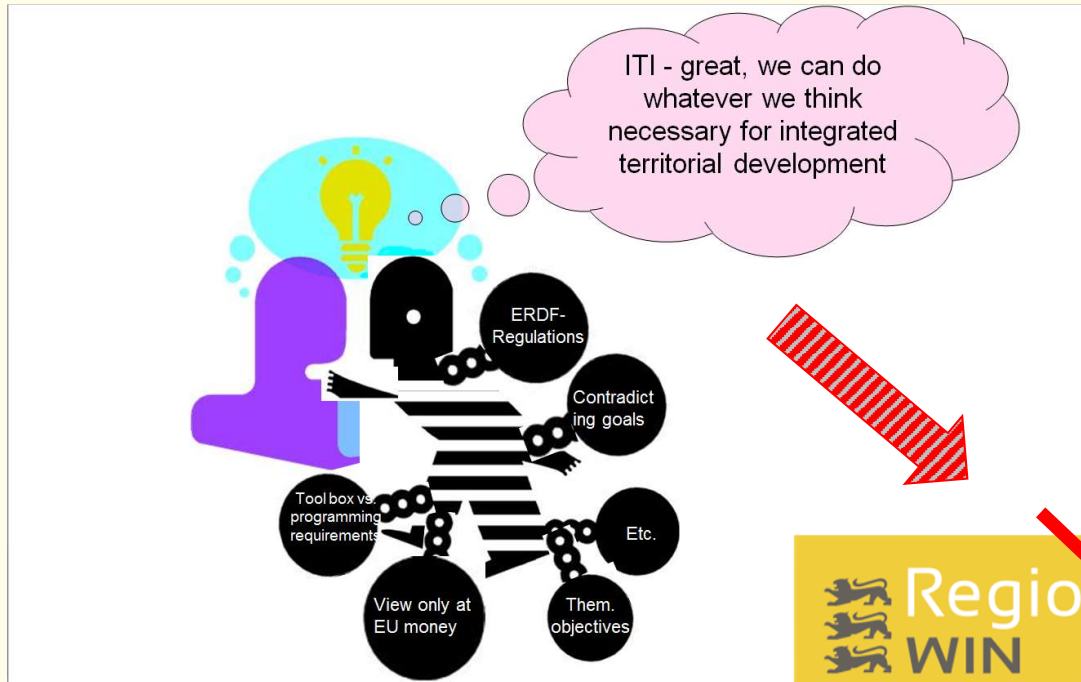
MINISTERIUM FÜR WIRTSCHAFT, ARBEIT UND WOHNUNGSBAU

Summary

- Smart Specialisation idea successfully transferred to sub-regional level
- Competition successful to start bottom-up processes and to involve a huge number of regional stakeholders in strategic regional development
- Principle of single-spatiality results in shaping strategic communities based on existing regional interconnections
- Follow-up of strategic processes in all contesting regions on their own accord regardless of an award
- Lighthouse projects cover full range of ERDF-OP opportunities
- Increase of regional influence on location decisions through prioritisation of Lighthouse projects
-  established as brand for regional development policies
-  resulted in unusually good press coverage for ERDF funded activities
- Regio**WIN** Network established (bi-annual meetings) as networking platform and mouthpiece for functional areas in terms of regional policy



Target conflicts between ITI-Idea and Funds Programming and MCS Requirements



... but not possible to implement under Art. 7 ERDF Regulation!!!



- ITI
- 68 Mio. ERDF investment in urban dimension
- competitive, participative bottom-up process

Due to formal reasons contribution to urban dimension impossible!



Baden-Württemberg

Empowering Principles of Regulation

- Reduce Target Overload within ESIF-regulations and connected executive regulations
- Refrain from all regulatory aspects that counteract the principle of subsidiarity, esp. within the executing regulations
- Choose a regulatory design, that allows bottom-up processes and competitive calls at all levels
- Concentration is fine, but must never prevent intelligent diversification
- Define goals and principles for Integrated Territorial Development, but refrain from prescriptions on their execution
- Give regions / managing bodies enough breathing room to develop an implementation model that fits into their regional administrative framework and culture
- Humbly acknowledge the power of the „other factors“ – ESIF can't save the world, but it can contribute



Baden-Württemberg

MINISTERIUM FÜR WIRTSCHAFT, ARBEIT UND WOHNUNGSBAU

Thank you for your kind attention!

Magdalene Häberle

contact: magdalene.haeberle@wm.bwl.de

<http://wm.baden-wuerttemberg.de/de/wirtschaft/wirtschaftsfoerderung/foerderpolitik-der-eu/europaeischer-fonds-fuer-regionale-entwicklung/>

www.efre-bw.de

www.regiowin.eu



Baden-Württemberg

MINISTERIUM FÜR WIRTSCHAFT, ARBEIT UND WOHNUNGSBAU